

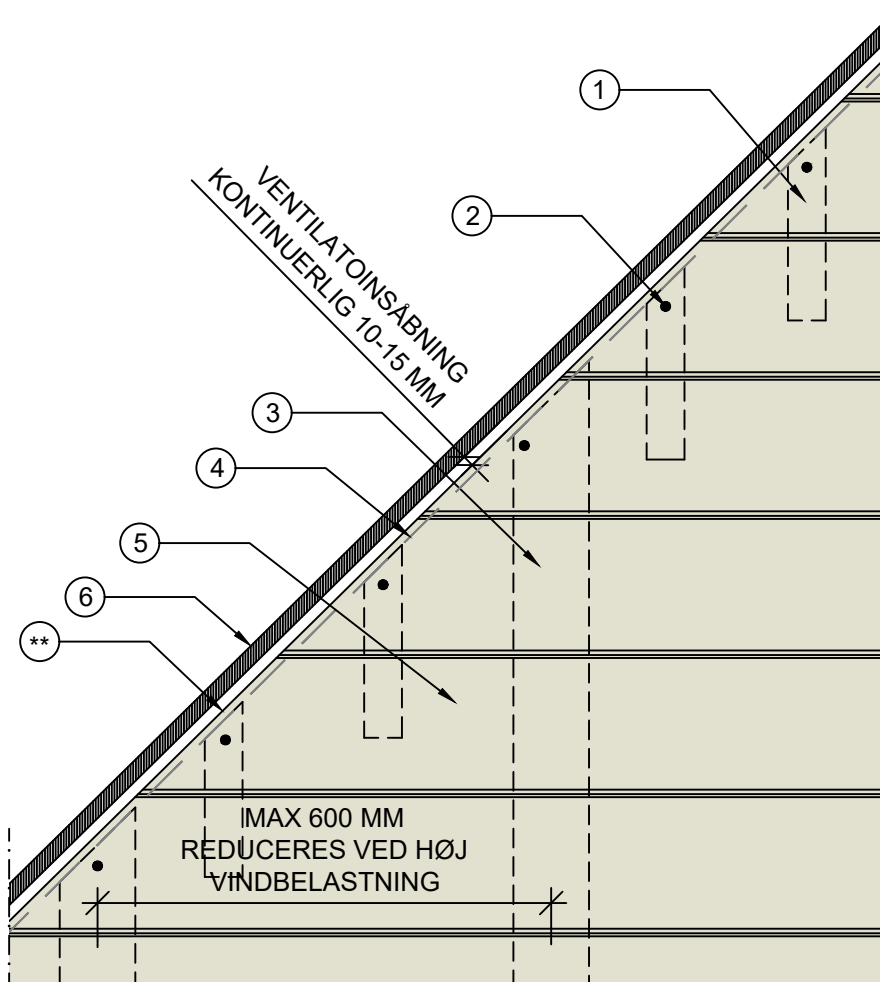
LISTE OVER TEGNINGER

Beskrivelse				Dato
Cedral Click - Vandret montering				2022-01-16
Detaljer				Sidste rev. dato
				2023-01-24
Tegningsnummer	Beskrivelse	Skala	Dato	Rev. dato
CC00	Placering afstandliste gavl / væg	-	20220116	20220810
CC01	Profiler Cedral Click – Vandret montering	1:2	20220116	
CC02	Startprofil vandret montering Jordniveau	1:2	20220116	
CC03	Sålbænk detalje	1:2	20220116	
CC04	Vandnæse vindue - startprofil	1:2	20220116	
CC04A	Vandnæse vindue - alternativ	1:2	20220116	
CC05	Top facade mod beton/sten	1:2	20220116	
CC05A	Top facade mod underbeklædning	1:2	20220116	
CC06	Standard samling - Symetrisk udvendigt hjørne	1:2	20220116	20230124
CC07	Sideinddækning vindue	1:2	20220116	20230124
CC07A	Symetrisk udvendigt hjørne - vindue	1:2	20220116	20230124
CC08	Invendigt hjørne	1:2	20220116	
CC09	Enkelt endekant profil	1:2	20220116	
CC10	Stern	1:2	20220116	
CC11	Vindskede	1:2	20220116	
CC11A	Vindskede alternativ	1:2	20220116	

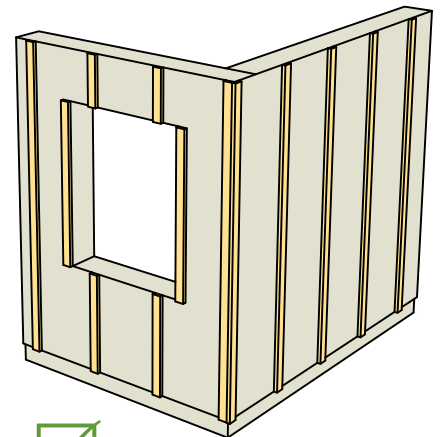
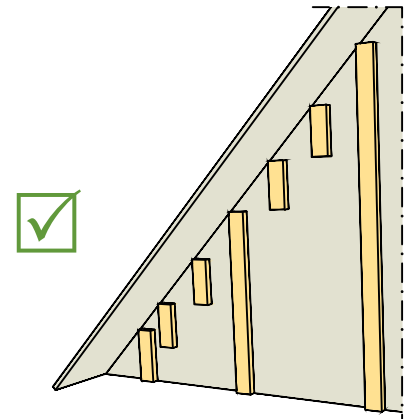
For yderligere oplysninger, kontakt venligst :

Tel: +45 73 66 19 99 | E-mail: etexnordic-dk@etexgroup.com | www.cedral.world
 Etex Nordic A/S | Vendersgade 74 | DK-7000 Fredericia

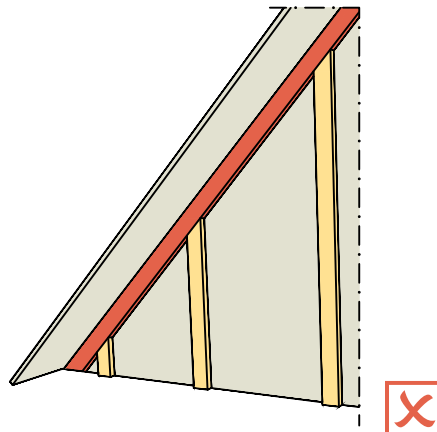
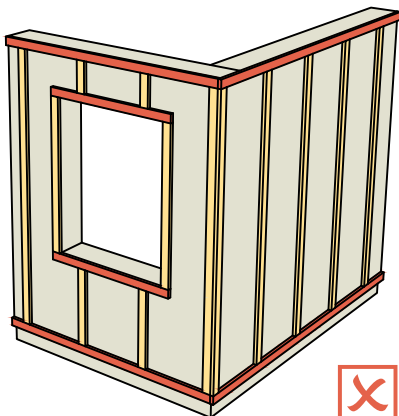




- ① AFSTANDSLISTE 25x50/25x100 L=250 MM
- ② SYNLIG I-FIX TRÆSKRUE 4,8x39 ANBEFALES VED VED TAGHÆLDNING UNDER 25 GRADER
- ③ AFSTANDSLISTE 25x100 MAX C/C 600 MM
- ④ PERFORERT VENTILATIONSPROFIL [4017076, 4017078]
- ⑤ CEDRAL CLICK
- ⑥ UNDERBEKLÆDNING



** EN ENKELT ENDEKANT PROFIL KAN MED FORDEL PLACERES LANGS PANELERNE FOR AT LETTE MONTERINGEN, SKJULE SAVVINKLER OG UNDGÅ KANTMALING OG BEVARE ÅBNINGSMÅLENE



FOR YDERLIGERE INFORMATION, VENLIGST KONTAKT:

INTERNET: WWW.CEDRAL.WORLD E-MAIL: etexnordic-dk@etexgroup.com TEL: +45 73 66 19 99

ETEX NORDIC A/S, VENDERSGADE 74, DK-7000 FREDERICIA

CEDRAL

CEDRAL TEGNING

CC 01

TITEL

PROFIL OVERSIGT - CEDRAL CLICK VANDRET

AF

DKIVPF

DATO

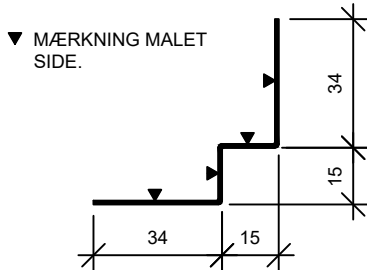
2022.01.16

SKALA

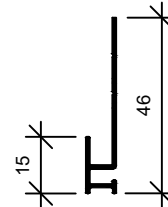
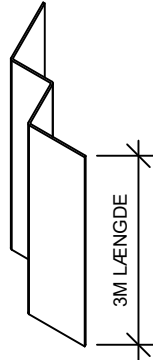
1:2

Copyright

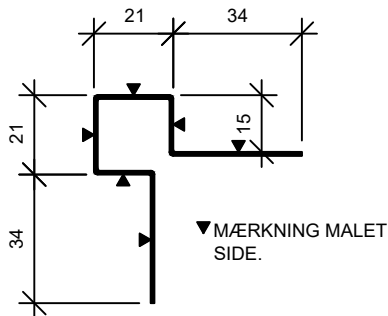
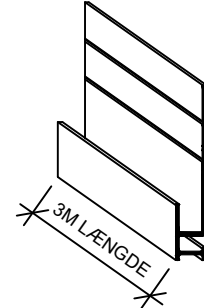
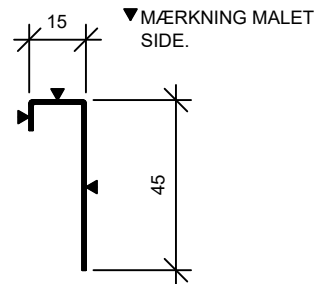
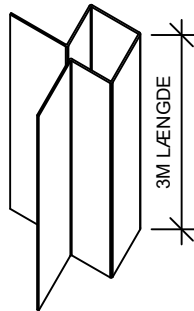
This information is supplied in good faith but no liability can be accepted for any loss or damage resulting from use. All details and quantities must be checked and approved prior to order.



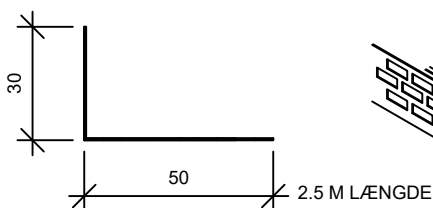
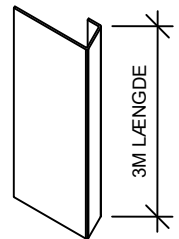
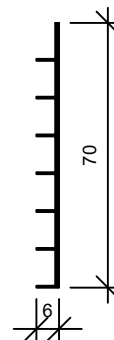
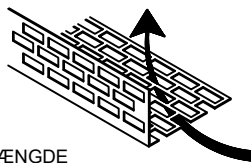
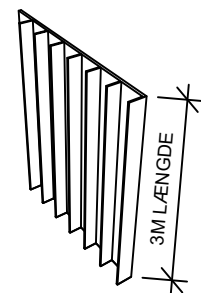
INDVENDIGT HJØRNE PROFIL



STARTPROFIL

SYMMETRISK
UDVENDIGT HJØRNE PROFIL

ENKEL ENDEKANT PROFIL

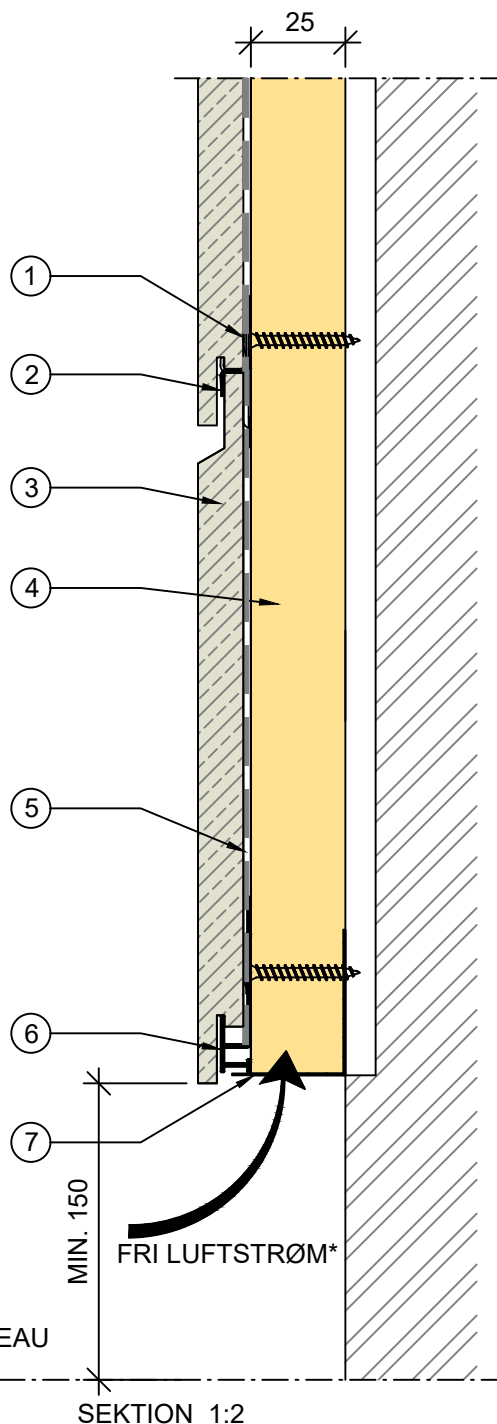
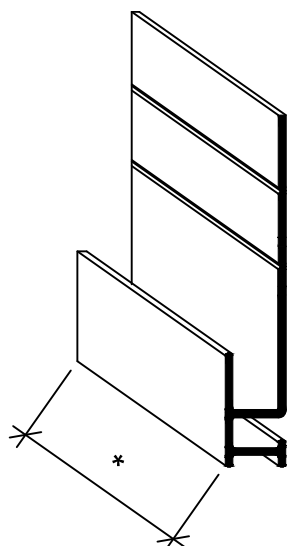
PERFORERET VENTILATIONSPROFIL [SOKKELSIKRING]
ART. NR. 4017078 - UBEHANDLET
ART. NR. 4017076 - SORTVENTILATIONSPROFIL PVC
ART. NR. 4009296

FOR YDERLIGERE INFORMATION, VENLIGST KONTAKT:
INTERNET: WWW.CEDRAL.WORLD E-MAIL: etexnordic-dk@etexgroup.com TEL: +45 73 66 19 99
ETEX NORDIC A/S, VENDERSGADE 74, DK-7000 FREDERICIA

- ① CLICK SKRUE [4043370]
- ② CEDRAL CLIP [4043370]
- ③ CEDRAL CLICK
- ④ AFSTANDSLISTE 25x100
- ⑤ PE FOLIE [4006466]
- ⑥ STARTPROFIL [4035155]
- ⑦ PERFORERT VENTILATIONSPROFIL [4017076, 4017078]



STARTPROFIL

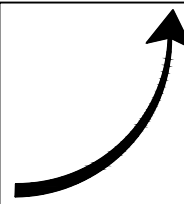
 SEKTION PROFIL 1:1
 *3M LÆNGDE


MIN. 150

FRI LUFTSTRØM*

JORDNIVEAU

SEKTION 1:2



* FRI KONTINUERLIG LUFTSTRØM
 MINIMUM 100 CM²/M KONTINUERLIG ÅBNING VED
 INDLØBET/UDLØB - VED ANVENDELSE AF 25 MM
 KLEMLISTE OG SOKKELSIKRING GIVER DETTE EN FRI
 ÅBNING PÅ MINIMUM 100 CM²/M

FOR YDERLIGERE INFORMATION, VENLIGST KONTAKT:

INTERNET: WWW.CEDRAL.WORLD E-MAIL: etexnordic-dk@etexgroup.com TEL: +45 73 66 19 99

ETEX NORDIC A/S, VENDERSGADE 74, DK-7000 FREDERICIA

CEDRAL

CEDRAL TEGNING

CC 03

TITEL

SÅLBÆNK DETALJE

AF

DKIVPF

DATO

2022.01.16

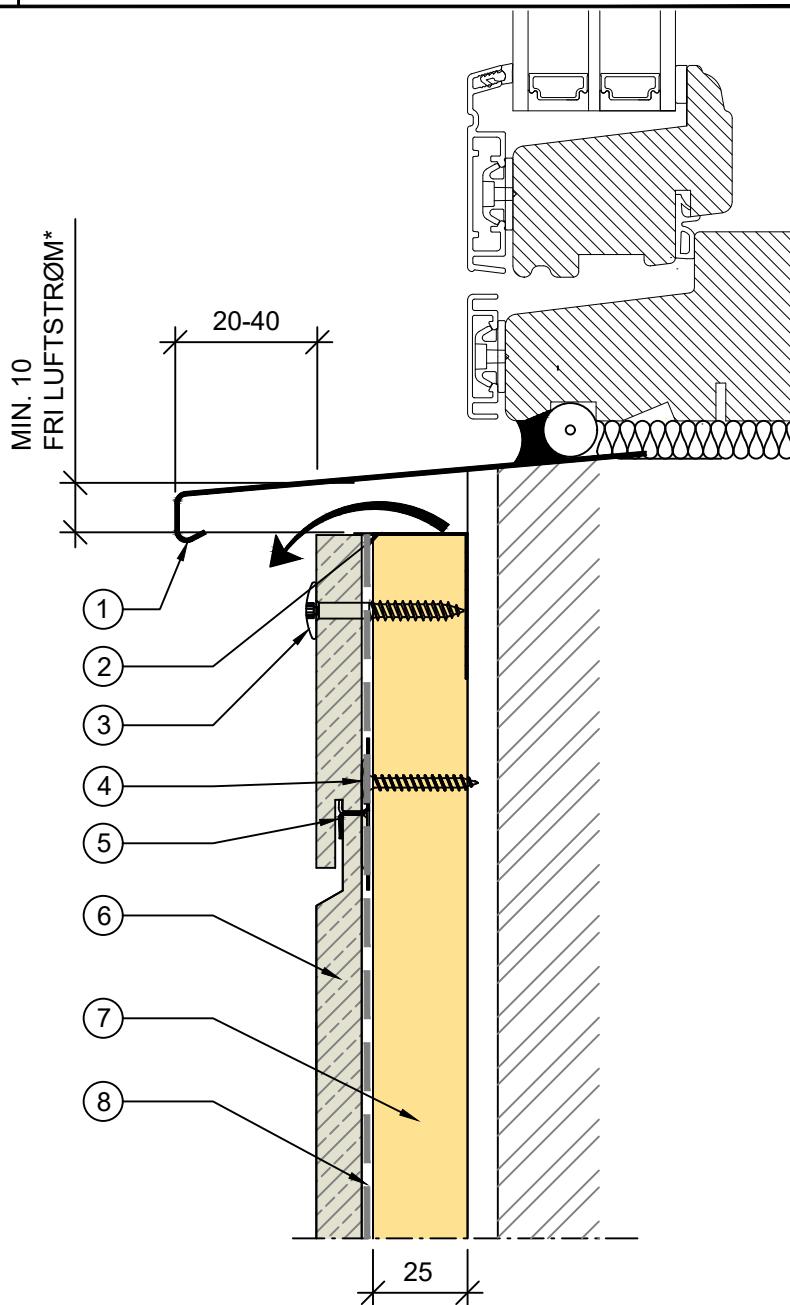
SKALA

1:2

Copyright

This information is supplied in good faith but no liability can be accepted for any loss or damage resulting from use. All details and quantities must be checked and approved prior to order.

- ① SÅLBÆNK
- ② PERFORERT VENTILATIONSPROFIL [4017076, 4017078]
- ③ SYNLIG I-FIX TRÆSKRUE 4,8x39
- ④ CLICK SKRUE [4043370]
- ⑤ CEDRAL CLIP [4043370]
- ⑥ CEDRAL CLICK
- ⑦ AFSTANDSLISTE 25x100
- ⑧ PE FOLIE [4006466]



SEKSION 1:2

* FRI KONTINUERLIG LUFTSTRØM
MINIMUM 100 CM²/M KONTINUERLIG ÅBNING VED
INDLØBET/UDLØB - ANBEFALET FRI ÅBNING 10-15 MM

FOR YDERLIGERE INFORMATION, VENLIGST KONTAKT:

INTERNET: WWW.CEDRAL.WORLD E-MAIL: etexnordic-dk@etexgroup.com TEL: +45 73 66 19 99

ETEX NORDIC A/S, VENDERSGADE 74, DK-7000 FREDERICIA

CEDRAL

CEDRAL TEGNING

CC 04

TITEL

VANDNÆSE VINDUE - STARTPROFIL

AF

DKIVPF

DATO

2022.01.16

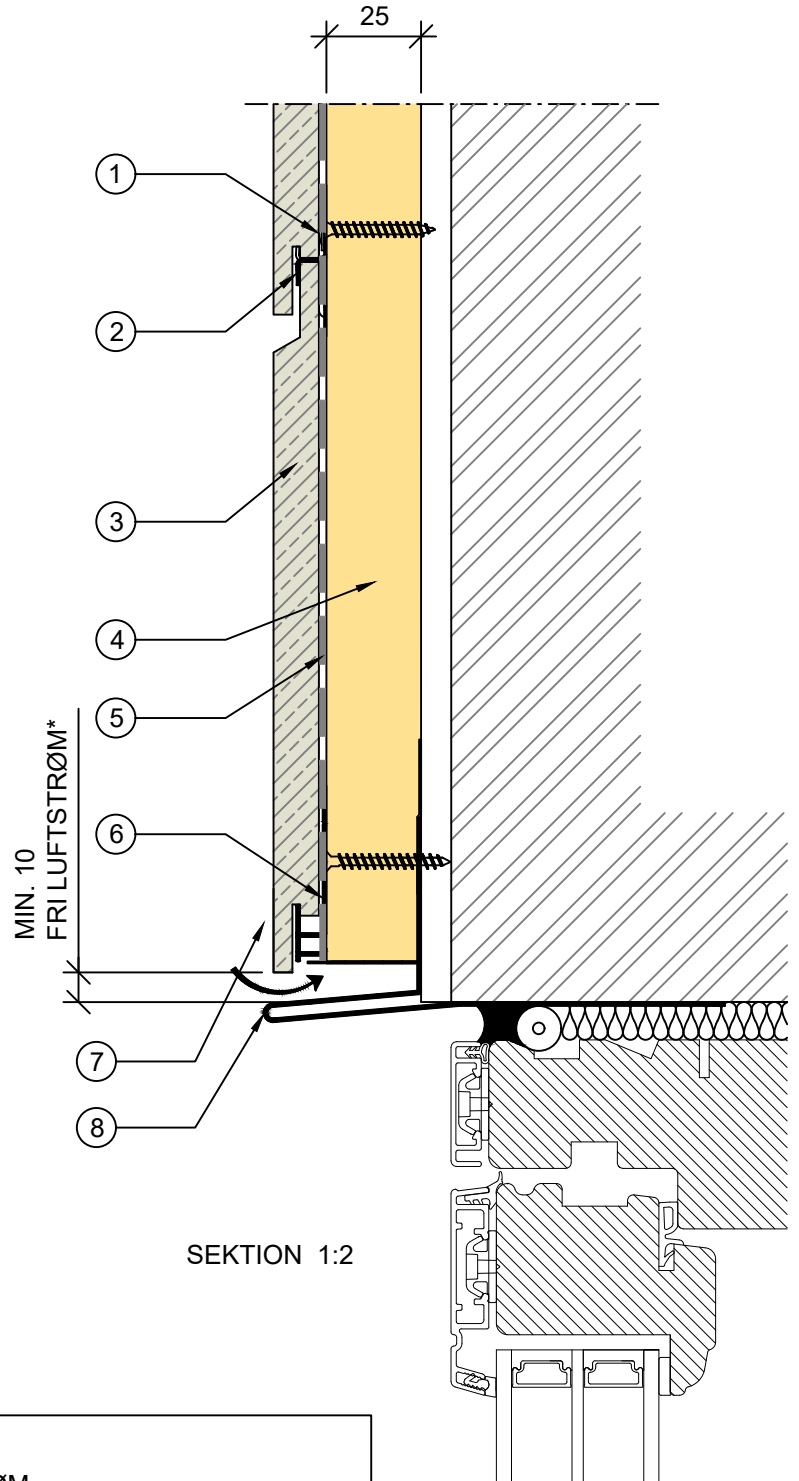
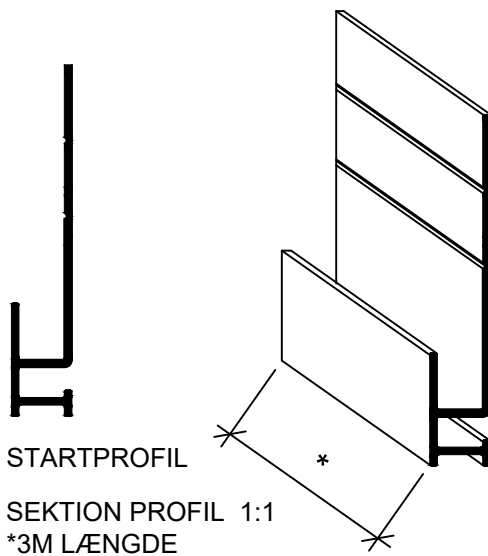
SKALA

1:2

Copyright

This information is supplied in good faith but no liability can be accepted for any loss or damage resulting from use. All details and quantities must be checked and approved prior to order.

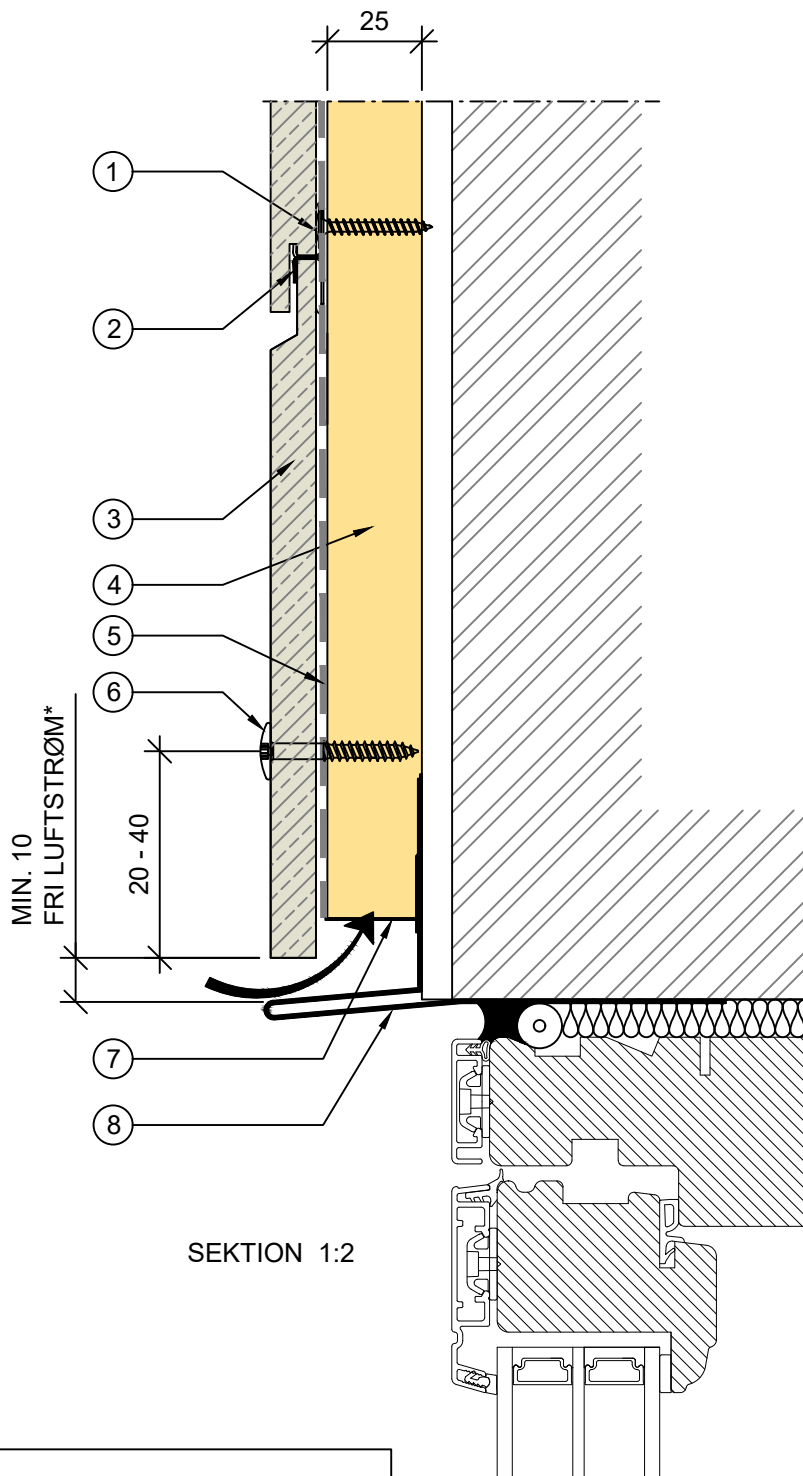
- ① CLICK SKRUE [4043370]
- ② CEDRAL CLIP [4043370]
- ③ CEDRAL CLICK
- ④ AFSTANDSLISTE 25x100
- ⑤ PE FOLIE [4006466]
- ⑥ STARTPROFIL [4035155]
- ⑦ PERFORERT VENTILATIONSPROFIL [4017076, 4017078]
- ⑧ VANDNÆSE CEDRAL CLICK



* FRI KONTINUERLIG LUFTSTRØM
MINIMUM 100 CM²/M KONTINUERLIG ÅBNING VED
INDLØBET/UDLØB - ANBEFALET FRI ÅBNING 10-15 MM

FOR YDERLIGERE INFORMATION, VENLIGST KONTAKT:
INTERNET: WWW.CEDRAL.WORLD E-MAIL: etexnordic-dk@etexgroup.com TEL: +45 73 66 19 99
ETEX NORDIC A/S, VENDERSGADE 74, DK-7000 FREDERICIA

- ① CLICK SKRUE [4043370]
- ② CEDRAL CLIP [4043370]
- ③ CEDRAL CLICK
- ④ AFSTANDSLISTE 25x100
- ⑤ PE FOLIE [4006466]
- ⑥ SYNLIG I-FIX TRÆSKRUE 4,8x39
- ⑦ PERFORERT VENTILATIONSPROFIL [4017076, 4017078]
- ⑧ VANDNÆSE CEDRAL CLICK



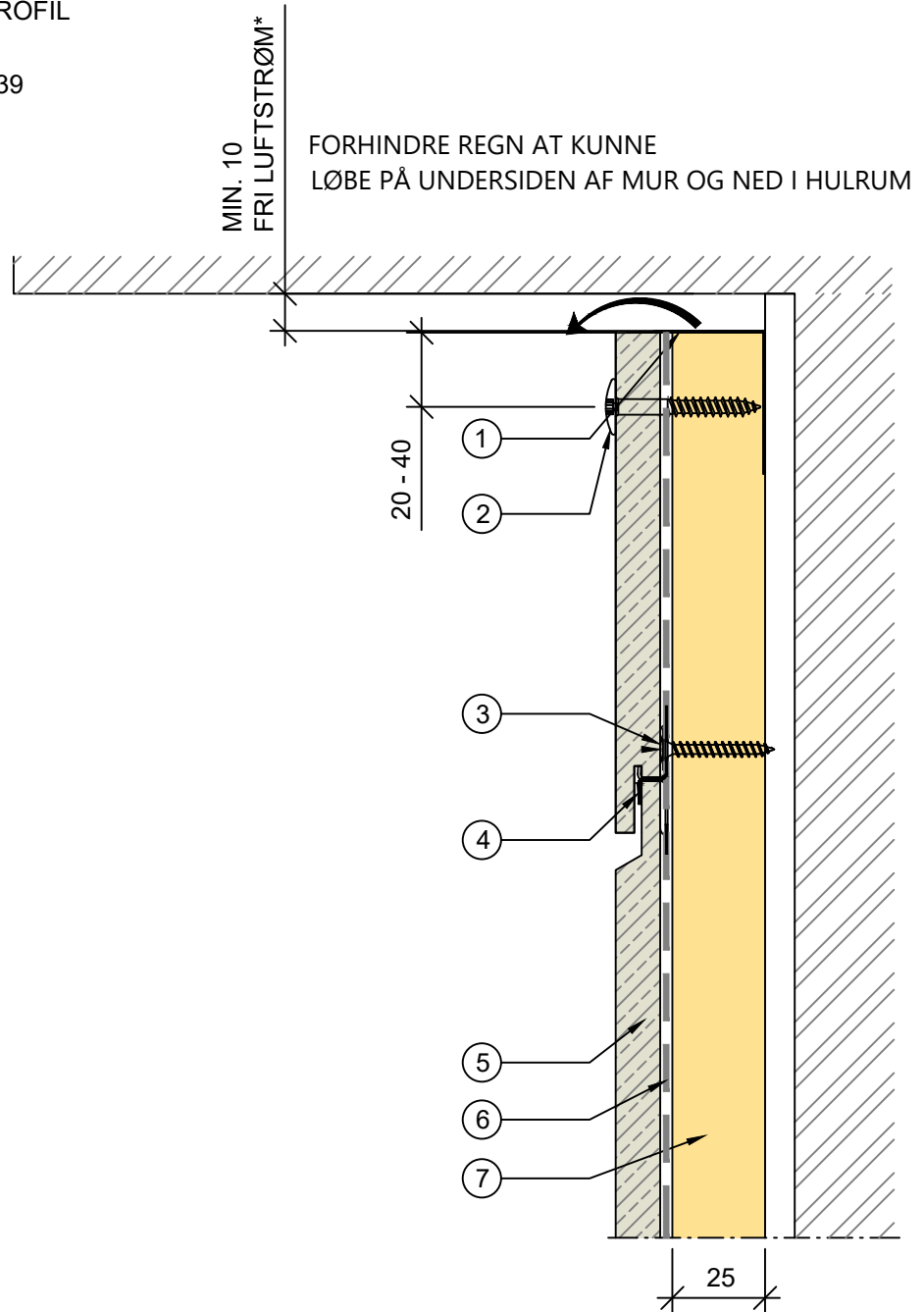
* FRI KONTINUERLIG LUFTSTRØM
MINIMUM 100 CM²/M KONTINUERLIG ÅBNING VED
INDLØBET/UDLØB - ANBEFALET FRI ÅBNING 10-15 MM

FOR YDERLIGERE INFORMATION, VENLIGST KONTAKT:

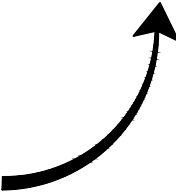
INTERNET: WWW.CEDRAL.WORLD E-MAIL: etexnordic-dk@etexgroup.com TEL: +45 73 66 19 99

ETEX NORDIC A/S, VENDERSGADE 74, DK-7000 FREDERICIA

- ① PERFORERT VENTILATIONSPROFIL [4017076, 4017078]
- ② SYNLIG I-FIX TRÆSKRUE 4,8x39
- ③ CLICK SKRUE [4043370]
- ④ CEDRAL CLIP [4043370]
- ⑤ CEDRAL CLICK
- ⑥ PE FOLIE [4006466]
- ⑦ AFSTANDSLISTE 25x100



SEKTION 1:2

 * FRI KONTINUERLIG LUFTSTRØM
 MINIMUM 100 CM²/M KONTINUERLIG ÅBNING VED
 INDLØBET/UDLØB - VED ANVENDELSE AF 25 MM
 KLEMLISTE OG SOKKELSIKRING GIVER DETTE EN FRI
 ÅBNING PÅ MINIMUM 100 CM²/M

FOR YDERLIGERE INFORMATION, VENLIGST KONTAKT:

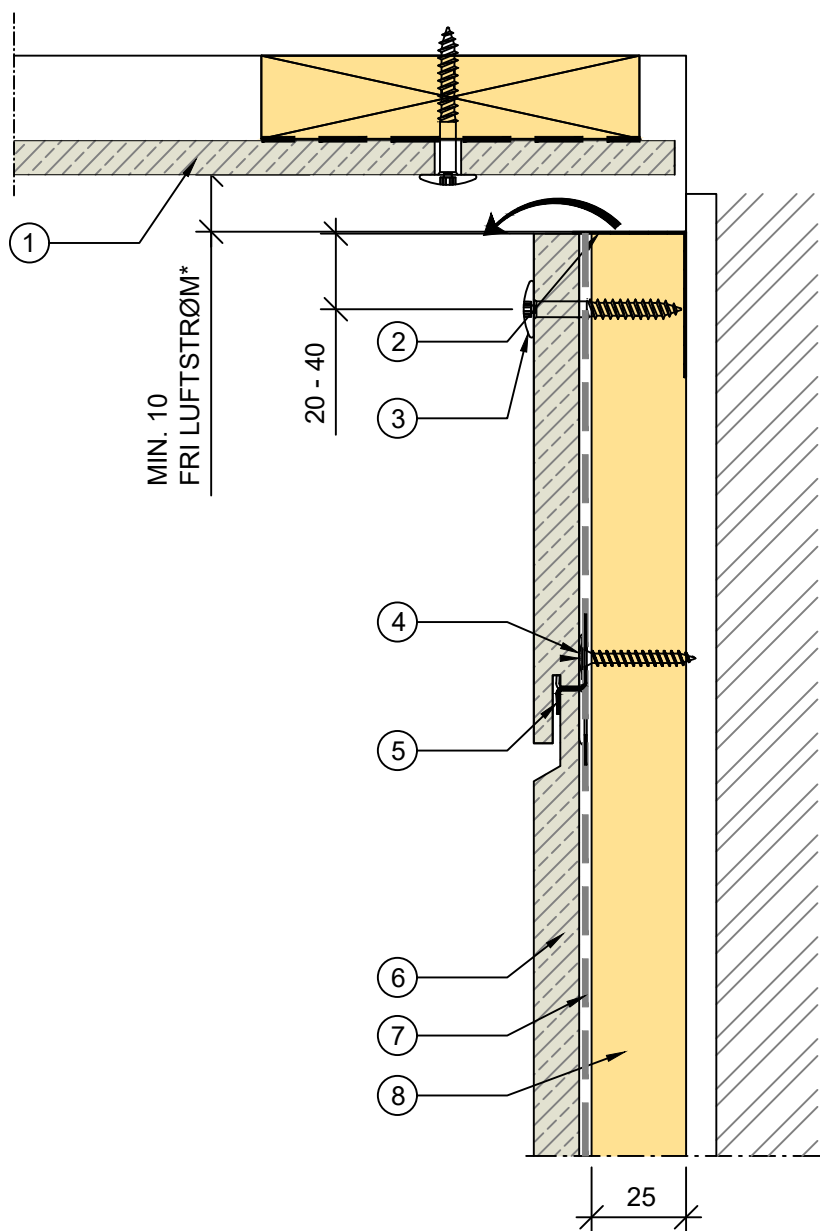
INTERNET: WWW.CEDRAL.WORLD E-MAIL: etexnordic-dk@etexgroup.com TEL: +45 73 66 19 99

ETEX NORDIC A/S, VENDERSGADE 74, DK-7000 FREDERICIA

Copyright

This information is supplied in good faith but no liability can be accepted for any loss or damage resulting from use. All details and quantities must be checked and approved prior to order.

- ① CEDRAL BOARD
- ② PERFORERT VENTILATIONSPROFIL [4017076, 4017078]
- ③ SYNLIG I-FIX TRÆSKRUE 4,8x39
- ④ CLICK SKRUE [4043370]
- ⑤ CEDRAL CLIP [4043370]
- ⑥ CEDRAL CLICK
- ⑦ PE FOLIE [4006466]
- ⑧ AFSTANDSLISTE 25x100


 MIN. 10
FRI LUFTSTRØM*

20 - 40

25

SEKTION 1:2

* FRI KONTINUERLIG LUFTSTRØM
MINIMUM 100 CM²/M KONTINUERLIG ÅBNING VED
INDLØBET/UDLØB - VED ANVENDELSE AF 25 MM
KLEMLISTE OG SOKKELSIKRING GIVER DETTE EN FRI
ÅBNING PÅ MINIMUM 100 CM²/M

FOR YDERLIGERE INFORMATION, VENLIGST KONTAKT:

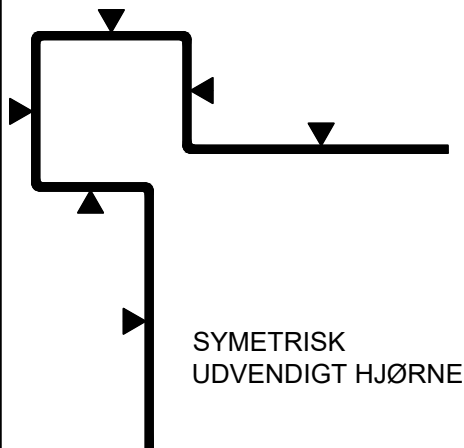
INTERNET: WWW.CEDRAL.WORLD E-MAIL: etexnordic-dk@etexgroup.com TEL: +45 73 66 19 99

ETEX NORDIC A/S, VENDERSGADE 74, DK-7000 FREDERICIA

Copyright

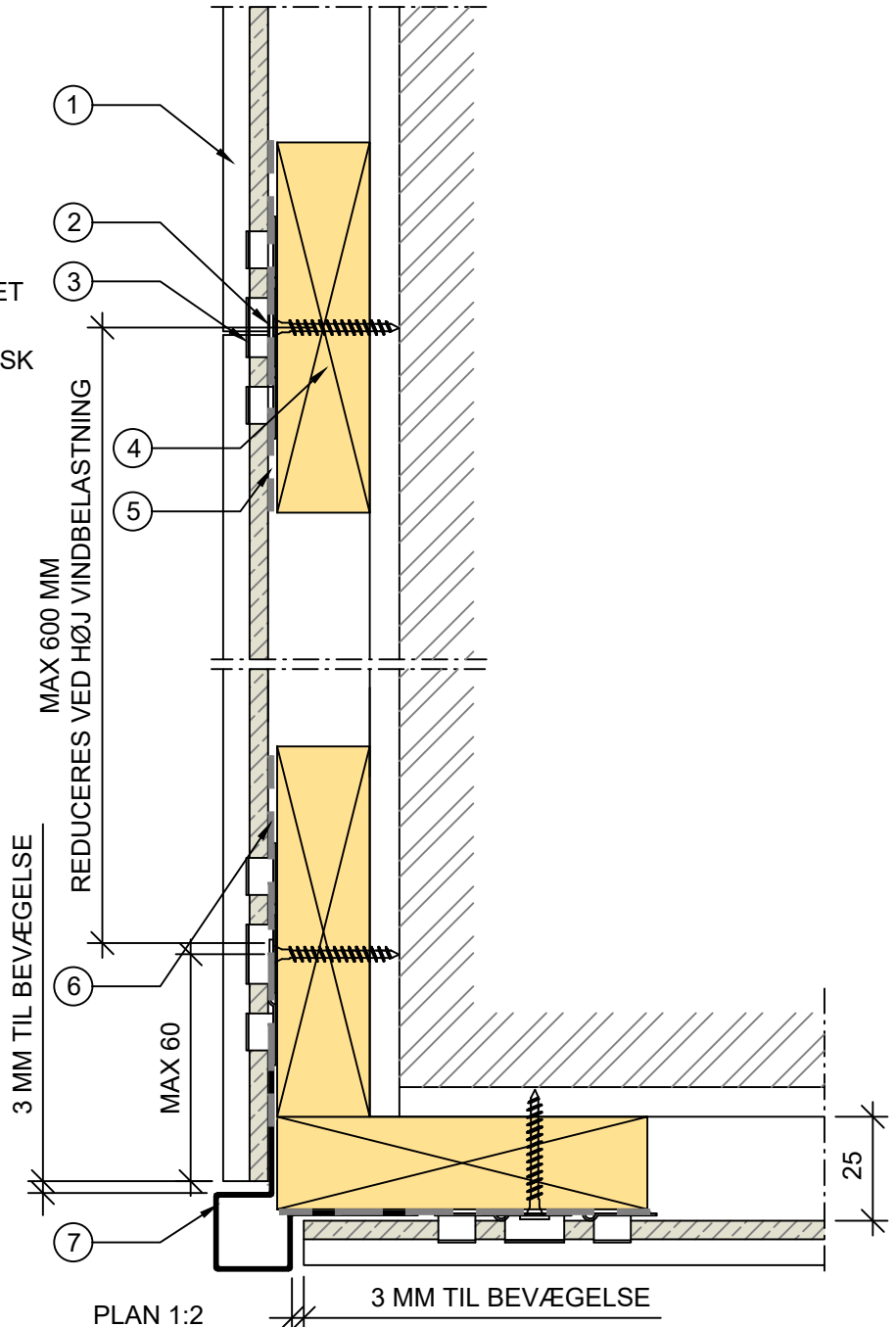
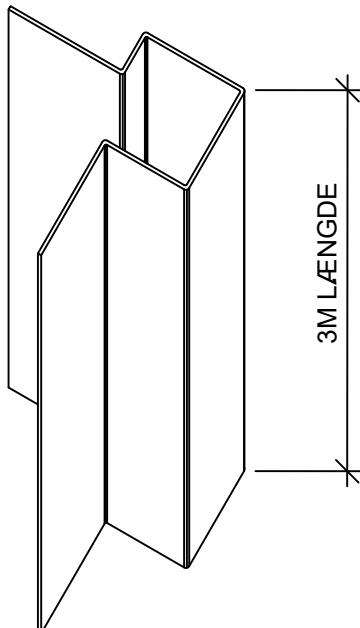
This information is supplied in good faith but no liability can be accepted for any loss or damage resulting from use. All details and quantities must be checked and approved prior to order.

- ① CEDRAL CLICK
- ② CLICK SKRUE [4043370]
- ③ CEDRAL CLIP [4043370]
- ④ AFSTANDSLISTE 25x100
- ⑤ PE FOLIE [4006466]
- ⑥ EPDM BÅND [4087325] ANBEFALET ALT. PE FOLIE [4006466]
- ⑦ UDVENDIGT HJØRNE SYMMETRISK



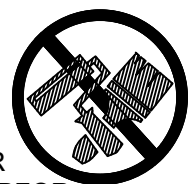
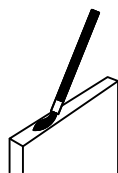
SEKTION 1:1

▼ MÆRKNING MALET SIDE.



CEDRAL KANTMALING KAN ANVENDES PÅ SAVSNIT MED EN LILLE PENSEL

BEHANDLE SAVSNIT MED SANDPAPIR P80, TØR OG REN OVERFLADE
TEMPERATUR IKKE UNDER 7 GRADER
PLANKERNE ER FABRIKSMÅLET, HVORFOR PENSELMALING PÅ FRONTEN VIL BLIVE SYNLIG



FOR YDERLIGERE INFORMATION, VENLIGST KONTAKT:

INTERNET: WWW.CEDRAL.WORLD E-MAIL: etexnordic-dk@etexgroup.com TEL: +45 73 66 19 99

ETEX NORDIC A/S, VENDERSGADE 74, DK-7000 FREDERICIA

Copyright

This information is supplied in good faith but no liability can be accepted for any loss or damage resulting from use. All details and quantities must be checked and approved prior to order.

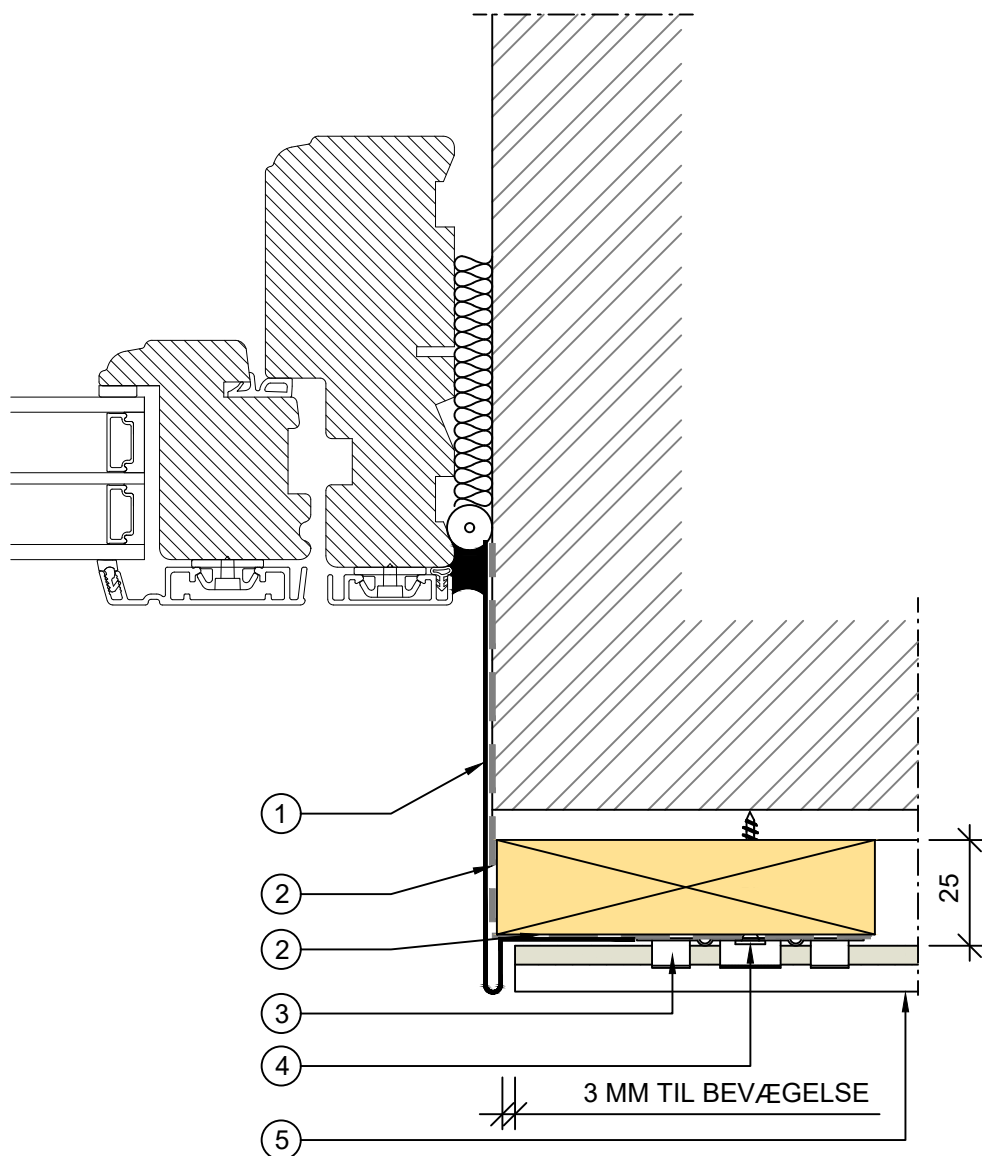
① SIDEINDDÆKNING CEDRAL CLICK

② EPDM BÅND [4087325] ANBEFALET
ALT. PE FOLIE [4006466]

③ CEDRAL CLIP [4043370]

④ CLICK SKRUE [4043370]

⑤ CEDRAL CLICK



PLAN 1:2

FOR YDERLIGERE INFORMATION, VENLIGST KONTAKT:

INTERNET: WWW.CEDRAL.WORLD E-MAIL: etexnordic-dk@etexgroup.com TEL: +45 73 66 19 99

ETEX NORDIC A/S, VENDERSGADE 74, DK-7000 FREDERICIA

CEDRAL

CEDRAL TEGNING

CC 07A

TITEL

SYMMETRISK UTVENDIG HJØRNE - VINDUE

AF

DKIVPF

DATO

2023.01.24

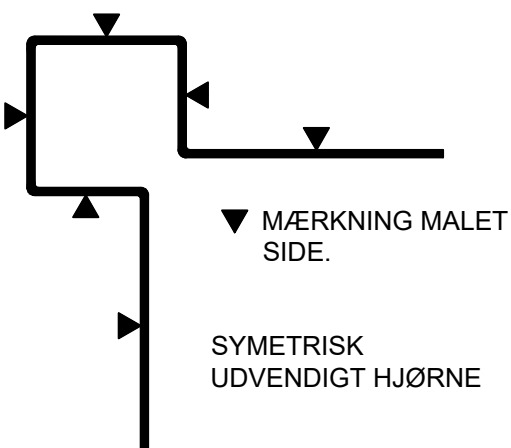
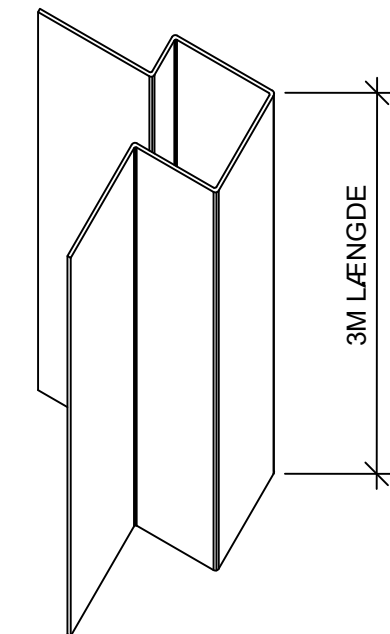
SKALA

1:2

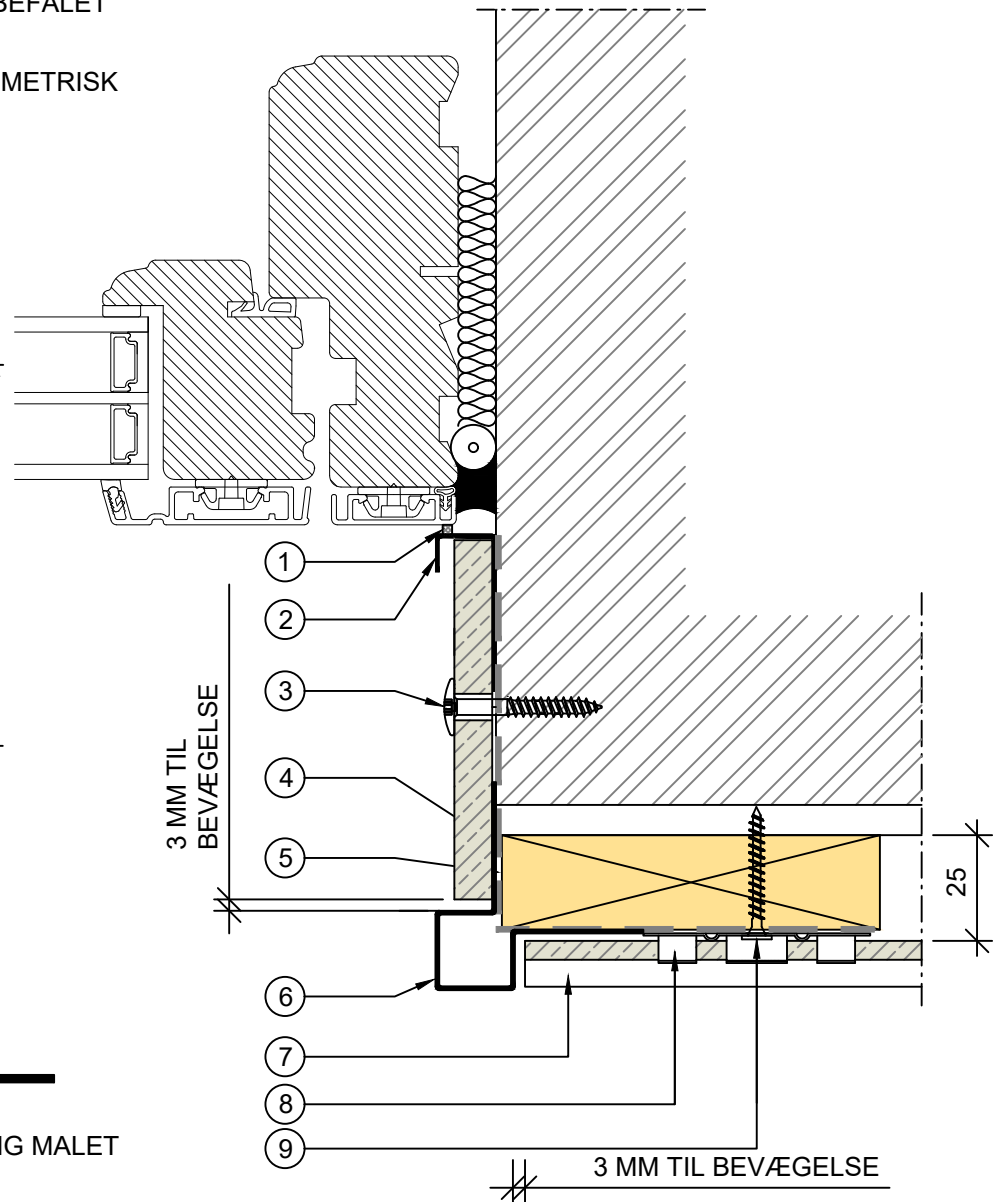
Copyright

This information is supplied in good faith but no liability can be accepted for any loss or damage resulting from use. All details and quantities must be checked and approved prior to order.

- ① SELVKLÆBENDE TÆTNINGSBÅND
- ② ENKEL ENDEKANT PROFIL
- ③ SYNLIG I-FIX TRÆSKRUE 4,8x39
- ④ CEDRAL LAP / CLICK EL. BOARD
- ⑤ EPDM BÅND [4087325] ANBEFALET
ALT. PE FOLIE [4006466]
- ⑥ UDVENDIGT HJØRNE SYMMETRISK
- ⑦ CEDRAL CLICK
- ⑧ CEDRAL CLIP [4043370]
- ⑨ CLICK SKRUE [4043370]



SEKTION 1:1



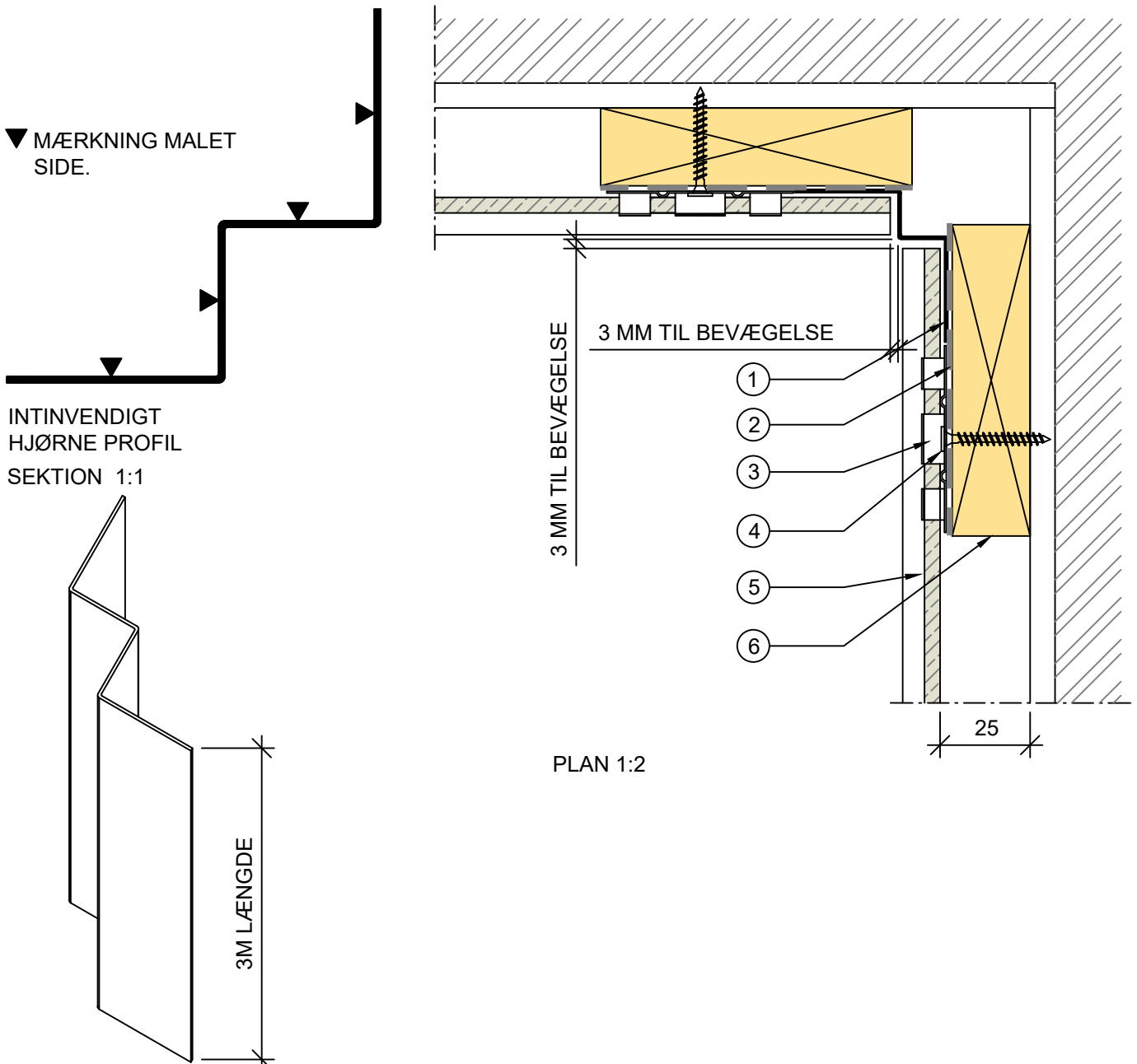
PLAN 1:2

FOR YDERLIGERE INFORMATION, VENLIGST KONTAKT:
INTERNET: WWW.CEDRAL.WORLD E-MAIL: etexnordic-dk@etexgroup.com TEL: +45 73 66 19 99
ETEX NORDIC A/S, VENDERSGADE 74, DK-7000 FREDERICIA

Copyright

This information is supplied in good faith but no liability can be accepted for any loss or damage resulting from use. All details and quantities must be checked and approved prior to order.

- ① INDVENDIGT HJØRNE
- ② PE FOLIE [4006466]
- ③ CEDRAL CLIP [4043370]
- ④ CLICK SKRUE [4043370]
- ⑤ CEDRAL CLICK
- ⑥ AFSTANDSLISTE 25x100



FOR YDERLIGERE INFORMATION, VENLIGST KONTAKT:

INTERNET: WWW.CEDRAL.WORLD E-MAIL: etexnordic-dk@etexgroup.com TEL: +45 73 66 19 99

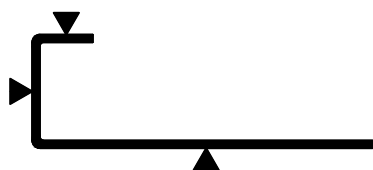
ETEX NORDIC A/S, VENDERSGADE 74, DK-7000 FREDERICIA

Copyright

This information is supplied in good faith but no liability can be accepted for any loss or damage resulting from use. All details and quantities must be checked and approved prior to order.

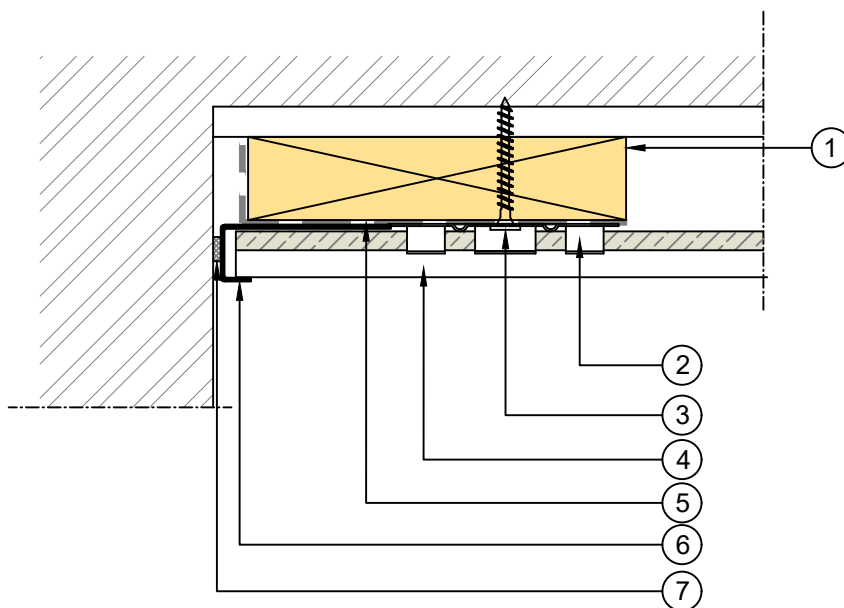
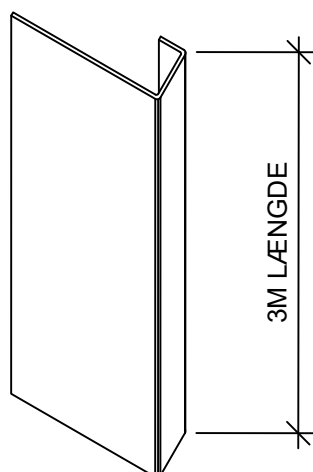
- ① AFSTANDSLISTE 25x100
- ② CEDRAL CLIP [4043370]
- ③ CLICK SKRUE [4043370]
- ④ CEDRAL CLICK
- ⑤ PE FOLIE [4006466]
- ⑥ ENKELT ENDEKANT PROFIL
- ⑦ SELVKLÆBENDE TÆTNINGSBÅND

▼ MÆRKNING MALET SIDE.



ENKELT
ENDEKANT PROFIL

SEKTION 1:1

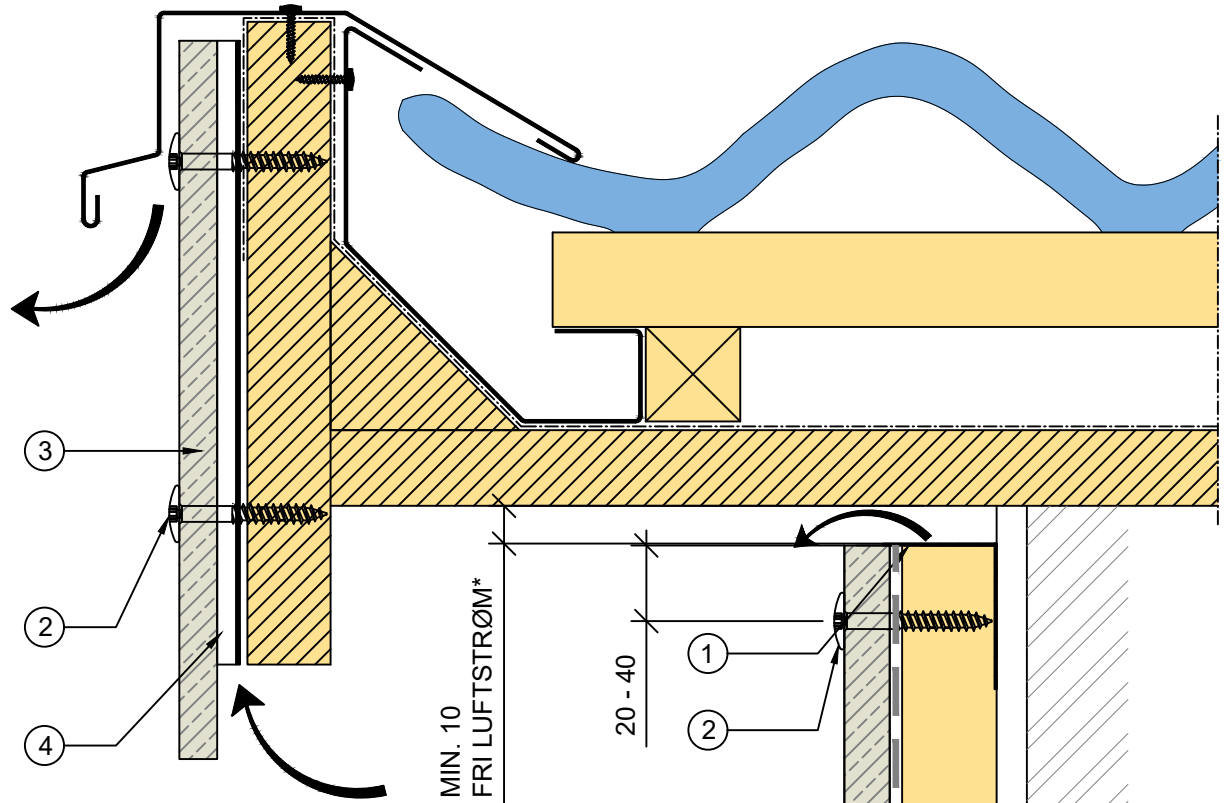


PLAN 1:2

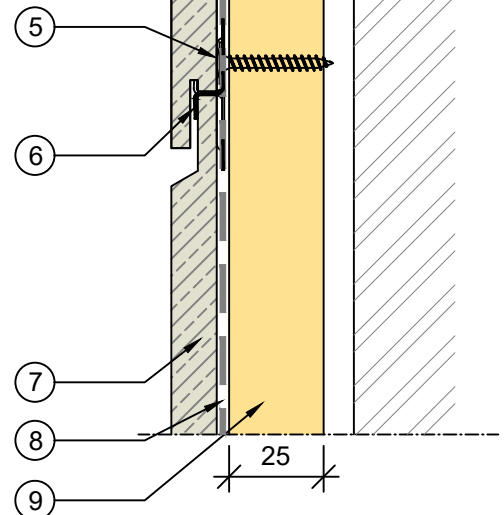
FOR YDERLIGERE INFORMATION, VENLIGST KONTAKT:

INTERNET: WWW.CEDRAL.WORLD E-MAIL: etexnordic-dk@etexgroup.com TEL: +45 73 66 19 99

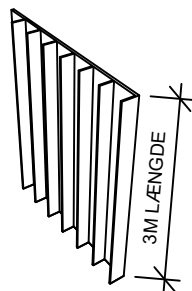
ETEX NORDIC A/S, VENDERSGADE 74, DK-7000 FREDERICIA



- ① PERFORERT VENTILATIONSPROFIL [4017076, 4017078]
- ② SYNLIG I-FIX TRÆSKRUE 4,8x39
- ③ CEDRAL LAP
- ④ 6MM VENTILATIONSPROFIL PVC B=70MM [4009296]
- ⑤ CLICK SKRUE [4043370]
- ⑥ CEDRAL CLIP [4043370]
- ⑦ CEDRAL CLICK
- ⑧ PE FOLIE [4006466]
- ⑨ AFSTANDSLISTE 25x100



VENTILATIONSPROFIL PVC



① VINDSKEDE M. UDLUFTNING IKKE ETEX PRODUKT

② I-FIX TRÆSKRUE 4,8x39

③ CLICK SKRUE [4043370]

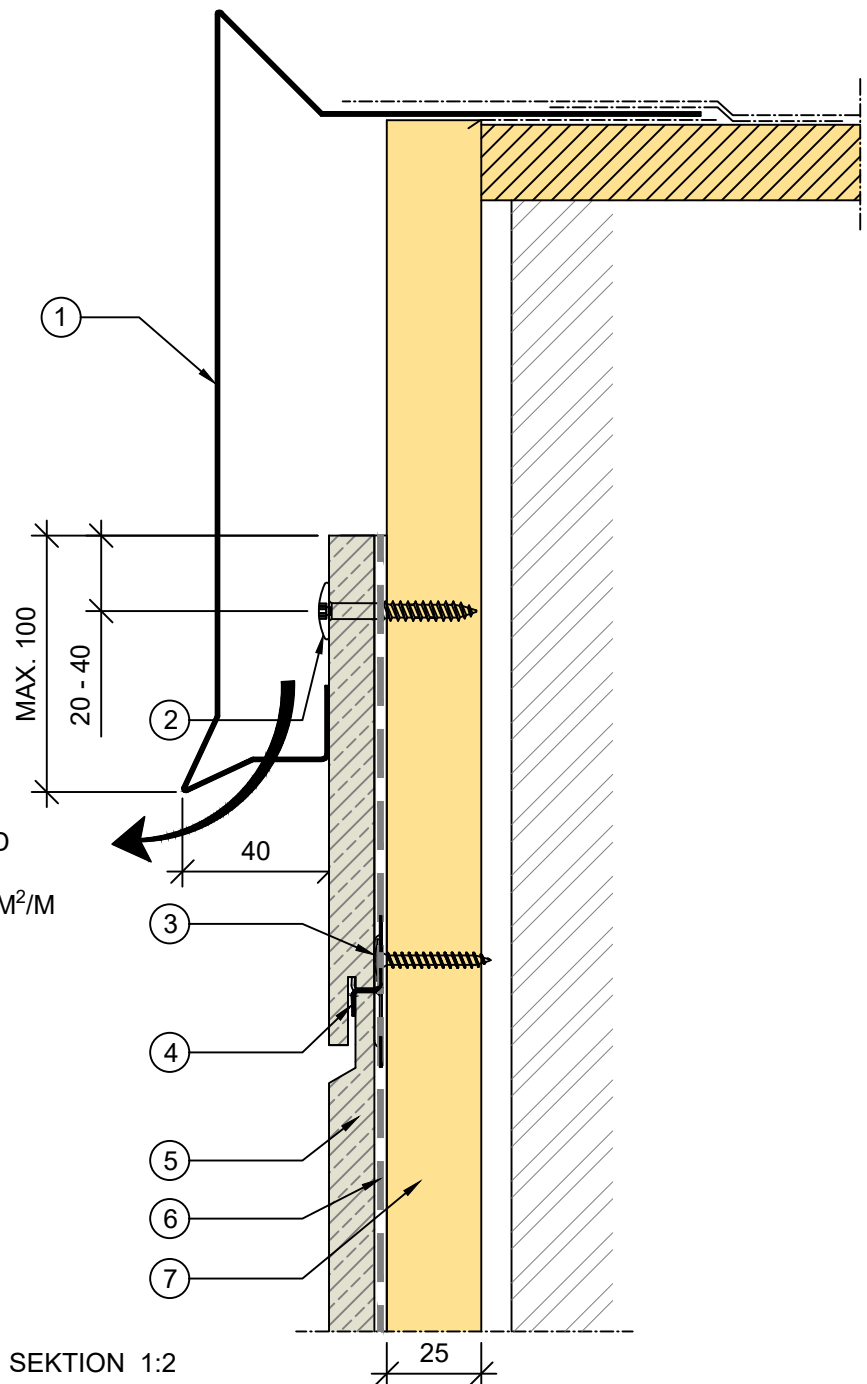
④ CEDRAL CLIP [4043370]

⑤ CEDRAL CLICK

⑥ PE FOLIE [4006466]

⑦ AFSTANDSLISTE 25x100

OBS!
 PROFIL SKAL VARE UDFORT MED
 UDLUFTNINGSHULLER
 UDLUFTNINGSAREAL MIN. 100 CM²/M
 FORHANDLES IKKE AF ETEX



SEKTION 1:2

* FRI KONTINUERLIG LUFTSTRØM
 MINIMUM 100 CM²/M KONTINUERLIG ÅBNING VED
 INDLØBET/UDLØB - VED ANVENDELSE AF 25 MM
 KLEMLISTE OG SOKKELSIKRING GIVER DETTE EN FRI
 ÅBNING PÅ MINIMUM 100 CM²/M

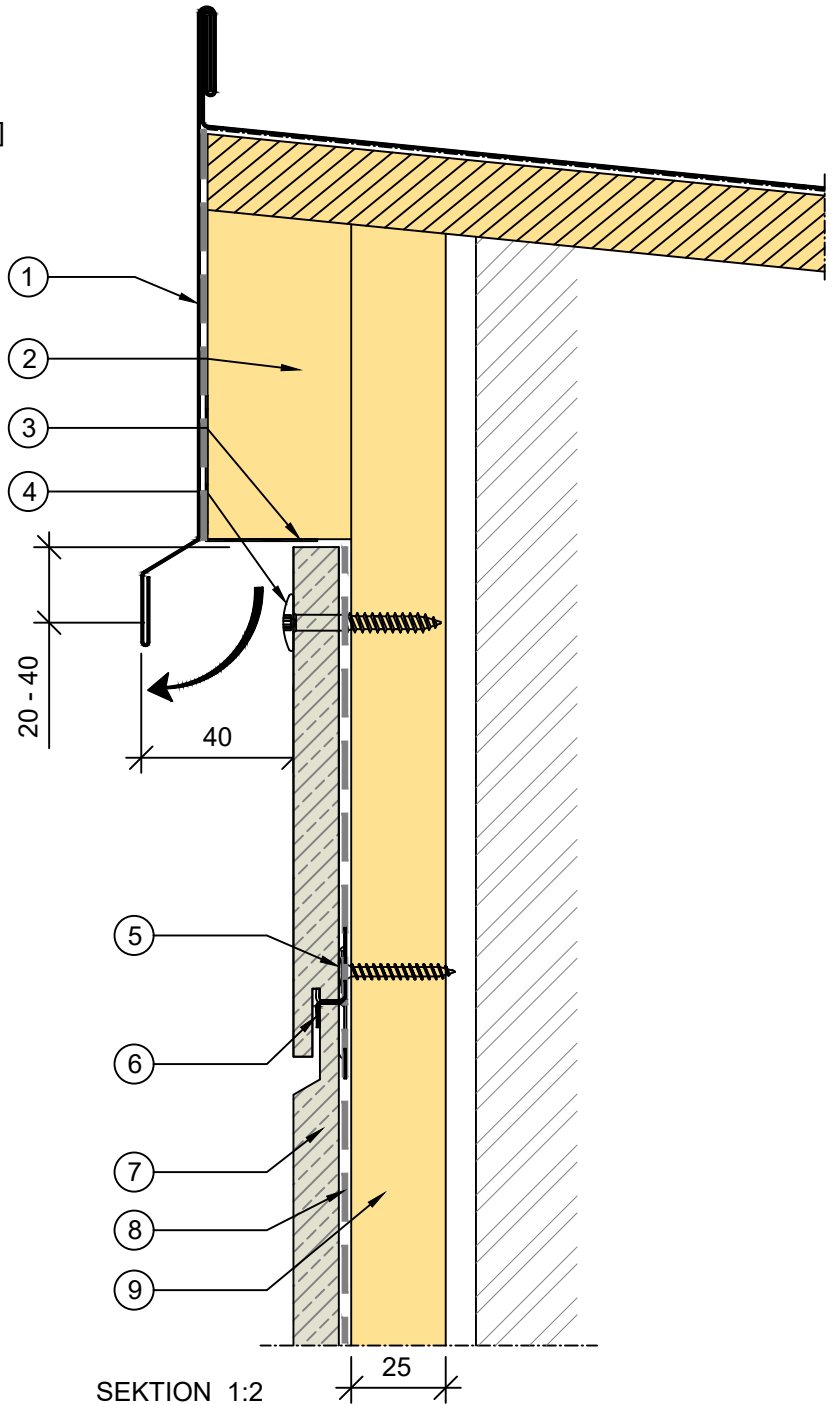
FOR YDERLIGERE INFORMATION, VENLIGST KONTAKT:

INTERNET: WWW.CEDRAL.WORLD E-MAIL: etexnordic-dk@etexgroup.com TEL: +45 73 66 19 99

ETEX NORDIC A/S, VENDERSGADE 74, DK-7000 FREDERICIA

- ① VINDSKEDE FORMIDLES IKKE AF ETEX
- ② EKSTRA AFSTANDSLISTE 38x73
- ③ ALU SOKKELSIKRING [4017076, 4017078]
- ④ I-FIX TRÆSKRUE 4,8x39
- ⑤ CLICK SKRUE [4043370]
- ⑥ CEDRAL CLIP [4043370]
- ⑦ CEDRAL CLICK
- ⑧ PE FOLIE [4006466]
- ⑨ AFSTANDSLISTE 25x100

OBS!
PROFIL FORHANDLES IKKE AF ETEX



* FRI KONTINUERLIG LUFTSTRØM
MINIMUM 100 CM²/M KONTINUERLIG ÅBNING VED
INDLØBET/UDLØB